

Imagine.



DVE
Digital Value Engineering

VersaEXPRESS

RF-640



Pure Genius

VersaEXPRESS RF-640

4 Colors

Pure Genius

The Roland VersaEXPRESS RF-640 offers the perfect formula for digital printing success: high production speed, outstanding print quality, ease of use and unsurpassed reliability. The genius behind the RF-640 is reflected in its ability to quickly produce high quality graphics and prints, while keeping cost of operation low. That translates into increased output, satisfied customers and more money in your pocket.

Productivity

Built for speed and stability

Featuring our most innovative print control technology, the RF-640 prints up to 48.5m²/h, approximately twice as fast as the previous model* and perfect for banner production. A redesigned take-up system supports high-speed, volume production, and two rigid shafts hold heavy rolls in place for reliably accurate media feeding. These and other advanced features add up to superior performance and rock solid stability, even at high speeds. * VersaArt RE-640

RF-640 throughput for banner

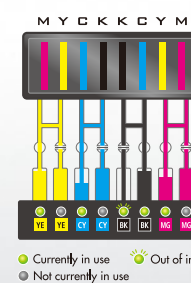
Max Speed (360x360/1PASS)	48.5 m ² /h
Billboard (360x720/2PASS)	26.9 m ² /h
High Speed (360x720/3PASS)	18.0 m ² /h
Standard (720x720/5PASS)	13.1 m ² /h
High Quality (1440x720/6PASS)	5.9 m ² /h

RF-640 throughput for vinyl

High Speed (360x720/3PASS)	18.5 m ² /h
Standard (540x720/5PASS)	13.1 m ² /h
Standard (720x720/6PASS)	10.9 m ² /h
High Quality (1440x720/8PASS)	4.4 m ² /h

Roland Ink Switching System for unattended volume production

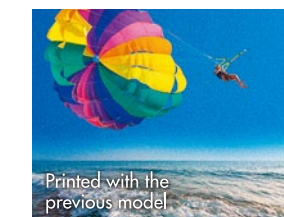
With Roland's proprietary Ink Switching System, you get double coverage. This unique system holds two ink cartridges per color, allowing up to 880cc of ink to be loaded at one time for unattended continuous printing. When the primary ink cartridge runs out, its backup begins supplying ink automatically for maximum productivity and flawless results.



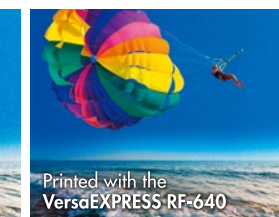
Quality

Superior image quality and vivid colors

The RF-640 combines the latest high-performance print head with Roland's GREENGUARD Gold certified, low-VOC ECO-SOL MAX 2 ink for beautifully rich, vivid colors and sharp imaging. Our environmentally-friendly eco-solvent ink has no nickel compounds, provides outstanding long-term outdoor durability, and is relatively odor free. Support for a broad range of media enables a wide range of applications, from outdoor signage to indoor posters and more.



Printed with the previous model



Printed with the VersaEXPRESS RF-640

Ease of Use

Intelligent design for easy operation

Like the rest of the Roland printer line, the RF-640 is easy to set up and operate. A redesigned front-loading ink cartridge unit facilitates ink replacement while minimizing the functional printer footprint. Media loading levers are positioned in both the front and back for maximum convenience. Special media brackets support even the heaviest media rolls as they are loaded into place, and adjustable media holders on both sides of the take-up system support the narrowest of rolls.



Economy

Outstanding cost performance

The RF-640 is engineered for low running costs and easy maintenance. Precision ink-jetting technology combined with new optimized profiles for ECO-SOL MAX 2 ink reduce ink consumption up to 20% when compared with the previous model.* An automated cleaning function also minimizes ink usage while preserving the print head. As a result, the RF-640 is highly efficient in both production and standby modes. * VersaArt RE-640



Amount of ink used

RF-640 with ECO-SOL MAX 2	3.76cc
Previous model with ECO-SOL MAX	4.71cc

Print description: ☐ RIP software: Roland VersaWorks
☐ Print mode: Standard ☐ Data size: 1118.0mm x 894.4mm
☐ Media: Vinyl

Smart Technology

Mobile printer management

With the RF-640, we have introduced Roland Printer Assist, a dedicated app for iPad tablets that allows you to manage printer functions remotely. With this intuitive new app, you can monitor the printer status and manage jobs comfortably from your iPad for maximum convenience and efficiency.



Available for download from the iTunes App Store.

Support

Unmatched service and support

As a Roland owner, a full range of customer service and support offerings is available to you. Roland DG's Creative Centers are a great source of inspiration and information on unique applications for your printer. Roland DG Academy teaches everything from printer basics to advanced production techniques and software tips. With Roland DG Care, you get the absolute best service for the full lifespan of your printer.





VersaEXPRESS RF-640

Specifications		
Printing technology		Piezoelectric inkjet
Media	Width	259 to 1,625 mm (10.2 to 64 in.)
	Thickness	Maximum 1.0 mm (39 mil) with liner
	Roll outer diameter	Maximum 210 mm (8.3 in.)
	Roll weight	Maximum 40 kg (88 lbs.)
	Core diameter*1	76.2 mm (3 in.) or 50.8 mm (2 in.)
Printing width*2		Maximum 1,615 mm (63.6 in.)
Ink cartridges	Types	Roland ECO-SOL MAX 2 440-cc cartridge
	Colors	Four colors (cyan, magenta, yellow, and black)
Printing resolution (dots per inch)		Maximum 1,440 dpi
Distance accuracy*3		Error of less than $\pm 0.3\%$ of distance traveled, or ± 0.3 mm, whichever is greater
Media heating system*4		Print heater, setting range for the preset temperature: 30 to 45°C (86 to 112°F) Dryer, setting range for the preset temperature: 30 to 50°C (86 to 122°F)
Connectivity		Ethernet (10BASE-T/100BASE-TX, automatic switching)
Power-saving function		Automatic sleep feature
Power requirements		AC 100 to 120 V $\pm 10\%$, 8.1A, 50/60 Hz or AC 220 to 240 V $\pm 10\%$, 4.1 A, 50/60 Hz
Power Consumption	During operation	Approx. 1,070 W
	Sleep mode	Approx. 14.5 W
Acoustic noise level	During operation	62 dB (A) or less
	During standby	49 dB (A) or less
Dimensions (with stand)		2,575 (W) x 795 (D) x 1,270 mm (H) (101.4 (W) x 31.1 (D) x 50 (H) in.)
Weight (with stand)		140 kg (309 lbs)
Environmental	Power on	Temperature: 15 to 32°C (59 to 90°F) (20°C [68°F] or more recommended), humidity: 35 to 80%RH (non-condensing)
	Power off	Temperature: 5 to 40°C (41 to 104°F), humidity: 20 to 80%RH (non-condensing)
Included items		Exclusive stands, power cord, media clamps, media holder, replacement blades for separating knife, software RIP, User's Manual, etc.

Ink		
Model		Description
ECO-SOL MAX 2 Ink	ESL4-4CY	Cyan, 440cc
	ESL4-4MG	Magenta, 440cc
	ESL4-4YE	Yellow, 440cc
	ESL4-4BK	Black, 440cc
Cleaning liquid	ESL4-CL	1pc.

Roland VersaWorks System Requirements	
Operating system	Windows® 8/8.1 (32/64-bit); Windows® 7 Professional or Ultimate (32/64-bit); Windows Vista® Business/Ultimate (32/64-bit)
CPU	Intel® Core™2 Duo, 2.0 GHz or faster recommended
RAM	2 GB or more recommended
Video card and monitor	A resolution of 1,280 x 1,024 or more recommended
Free hard-disk space	40 GB or more recommended
Hard-disk file system	NTFS format
Optical drive	DVD-ROM drive

*Roland VersaWorks is a 32-bit application, which runs on 64-bit Windows® with WoW64 (Windows 32-bit on Windows 64-bit). *Windows RT is excluded.

Roland Printer Assist Requirements	
Operating system	iOS 6.0 or later
Device	iPad2 or later

*iPad is a trademark of Apple Inc., registered in the U.S. and other countries.

*1 The media holder for this machine is exclusively designed for media rolls with a paper tube measuring 3 inches in diameter. To use 2-inch media rolls, the optional media flanges are required. *2 The length of the production run is subject to the limitations of the software program. *3 *Media type: Media specified by Roland DG Corp. *Temperature: 25°C (77°F), humidity: 50% *Roll media must be loaded correctly. *Excluding expansion/contraction of the media *Not assured when the print heater or dryer is used. *All correction or adjustment functions of this machine have been made properly. *Print travel: 1 m *4 *Warm up is required after power up. This may require 5 to 20 minutes, depending on the operating environment. *Depending on the ambient temperature and media width, the preset temperature may not be reached.



Roland DG products that feature this environmental label meet the company's criteria for environmental consciousness, a set of standards based on ISO 14021 self-declaration type II. For more information, please visit www.rolanddg.com.



Roland reserves the right to make changes in specifications, materials or accessories without notice. Your actual output may vary. For optimum output quality, periodic maintenance to critical components may be required. Please contact your Roland dealer for details. No guarantee or warranty is implied other than expressly stated. Roland shall not be liable for any incidental or consequential damages, whether foreseeable or not, caused by defects in such products. Adobe, PostScript, PostScript 3 and the PostScript logo are trademarks of Adobe Systems Incorporated. PANTONE® is the property of Pantone LLC. All other trademarks are the property of their respective owners. Reproduction or use of copyrighted material is governed by local, national, and international laws. Customers are responsible for observing all applicable laws and are liable for any infringement. Roland DG Corp. has licensed the MMP technology from the TPL Group.

Roland®

AUTHORIZED DEALER:

OLYMP Electronic COM
Jovana Đaje 10 Beograd
Tel/Fax 011/2863-424 3049-355
Roland
DIGITAL GROUP
www.olymp.rs office@olymp.rs
AUTORISED DISTRIBUTOR

Printed in Japan. RDG-416100699 14 MAY F-3 D-S

www.rolanddg.com