

TURN UP THE VOLUME

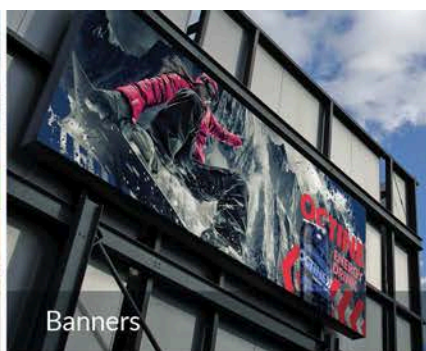
SOLJET EJ-640



Imagine.  Roland



Wall Wraps



Banners



Signs



Backlits

TURN UP THE VOLUME ON YOUR PRODUCTION

Bring high productivity, quality output and low operating costs to your business with Roland DG's SOLJET EJ-640 production printer and new EJ inks.

The EJ-640's sturdy construction delivers consistent, exceptional output at high production speeds across a range of applications including outdoor and indoor signage, banners, wall and vehicle wraps.

With advanced features including an integrated tri-heater system, excellent media compatibility and a large diameter grit roller to aid smooth, precise media transit, you can spend less time operating your printer and more time growing your business.

The EJ-640 offers a high return with low investment and is the ideal production printer, either as a stand-alone device or as an integral part of your machine portfolio.

As you would expect from reliable Roland DG technology, every feature has been designed to ensure optimum results:

- Dual eight-channel Piezo inkjet heads house 180 nozzles per channel
- Staggered print heads cover a large print width for increased production. Arranged in a mirrored formation to reduce the chance of chromatic banding
- New quick-drying Roland DG EJ inks in 1 litre cartridges offer low consumption and low running costs
- Available in two ink configurations: 4 colour (dual CMYK) or 7 colour (CMYKLcLmLk)
- Roland Ink Switching System ensures continuous unattended printing in 4 colour mode
- Subtank enables uninterrupted change of ink cartridges
- Includes all new VersaWorks Dual RIP software to further optimise productivity and quality
- Variable dot control achieves smooth gradations and deep image saturation on a huge range of media
- Advanced media feed for smooth, precise media transit
- Rugged construction ensures stability



Vehicle Wraps



Window graphics



Posters

Produce vibrant, eye-catching prints for impactful, high-volume applications with ease.



With dual staggered print heads and a stable industrial design, it's never been easier to deliver stunning high volume print.

THE NEWLY DESIGNED **SOLJET EJ-640**



Developed for long-running, low-maintenance production.

- ✓ New economical EJ ink in 1 litre ink cartridges
- ✓ Roland Ink Switching System
- ✓ Front-mounted take-up unit
- ✓ Support of heavy roll media up to 40kg
- ✓ Advanced roller systems for smooth media transit
- ✓ Adjustable print head height supports various media thicknesses
- ✓ Adjustable media feed for accurate centring and precise take-up



Discover more about the EJ-640's advanced capabilities at www.rolanddg.co.uk

— NEW EJ INKS —

LOWER RUNNING COSTS FOR HIGH VOLUME PRINT

The EJ-640 runs optimally with an exclusive range of Roland EJ inks, offering consistent printing in bold, exciting colours at reduced operating cost. Available in 1 litre cartridges and in 4- or 7-colour configurations: dual CMYK or CMYKLcLmLk formats.

VersaWorks Dual Compatible

Included with the SOLJET EJ-640 is the all new VersaWorks Dual RIP software, developed to include the latest native PDF and Postscript engine for better image translations when layers and transparencies are used. The native PDF engine allows VersaWorks Dual to accurately and efficiently translate complex artworks from design packages. VersaWorks Dual also has the latest Postscript engine allowing users to benefit from the best translation for each artwork type and preserve legacy file compatibility.

SOLJET EJ-640 Highlights & Specifications

- Supports media rolls up to 1625mm (64") wide and 40kg (110 lbs) in weight
- Dual staggered print heads
- Stable industrial design
- Quick-drying EJ inks in high-capacity 1L cartridges
- Print speeds:
 - 4 colours: 20m/h (720x720dpi, 6Pass)
 - 7 colours: 10m/h (720x720dpi, 12Pass)
- 1440 dpi maximum resolution
- Power Requirements - AC 100 to 120 V $\pm 10\%$, 11 A, 50/60 Hz or AC 220 to 240 V $\pm 10\%$, 5.5 A, 50/60 Hz
- Power Consumption - During operation: approx. 1,450W Sleep mode: approx. 75 W
- Dimensions (with stand) - 2,750(W) x 785(D) x 1,520(H) mm (108(W) x 31(D) x 59.9(H) in.)
- Integrated tri-heater system
Optional extended heater/blower (DU2)
- Three-part wiper system protects print heads and prolongs life
- VersaWorks Dual RIP software included
- Roland OnSupport™ enables remote tracking of production status with automated e-mail notifications
- Roland Printer Assist iPad app* allows remote management of common printer functions
- Can be paired with Roland DG's GX cutter range for optimal print & cut production

* is a trademark of Apple, Inc.

 **OLYMP Electronic COM**
Jovana Đaje 10 Beograd
Tel/Fax 011/2863-424 3049-355
 **ROLAND**
DIGITAL GROUP
www.olymp.rs office@olymp.rs
AUTORISED
DISTRIBUTOR

Imagine.  **Roland**